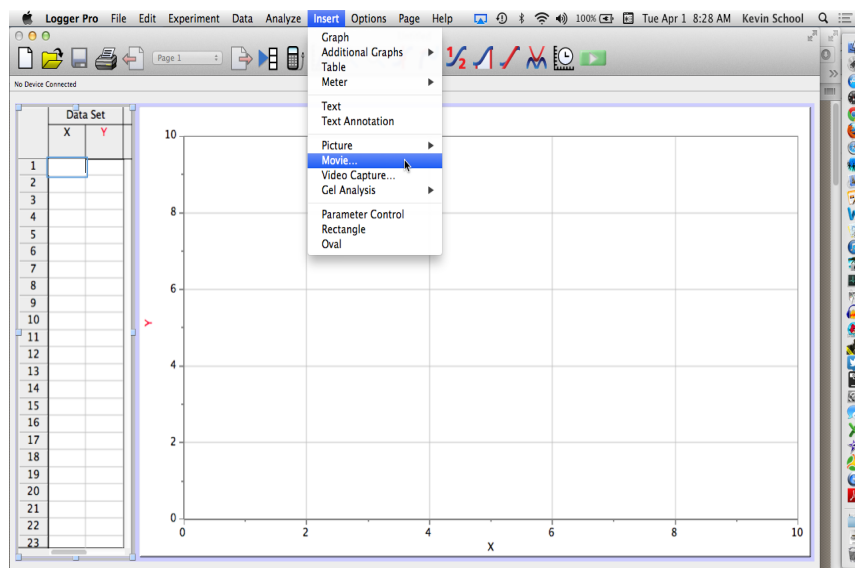


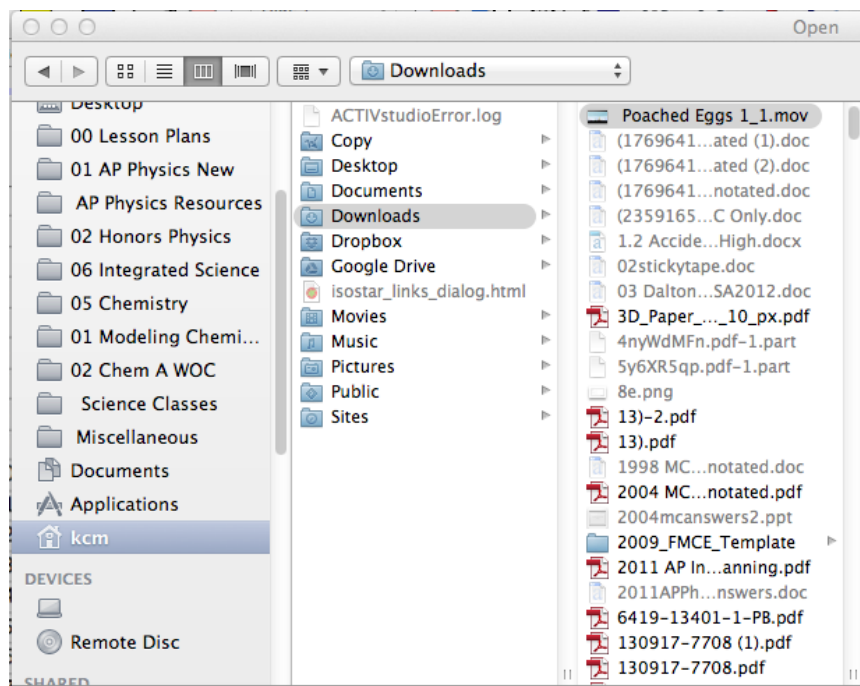
LoggerPro Help for Analyzing Video Files

How to import a movie:

- Download a movie from tigerphysics.org
 - On **Safari** hold down control and click on the download file link.
 - On **Chrome** click on download file link then once the movie loads hold down control and click on video.
- Open LoggerPro
- Go to the insert drop down menu → choose movie



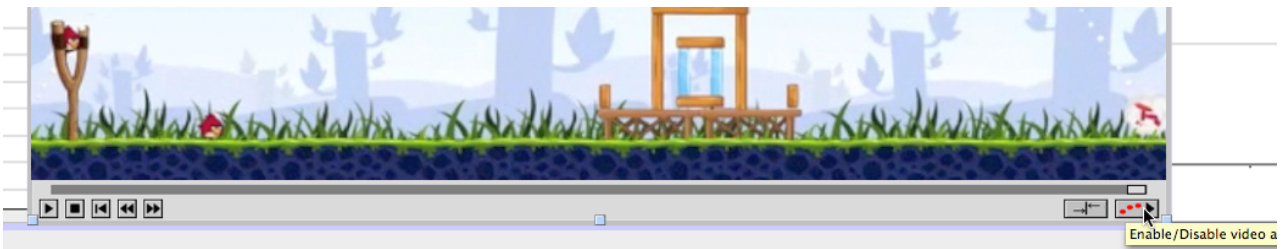
- Find where the downloaded movie is stored and select it.



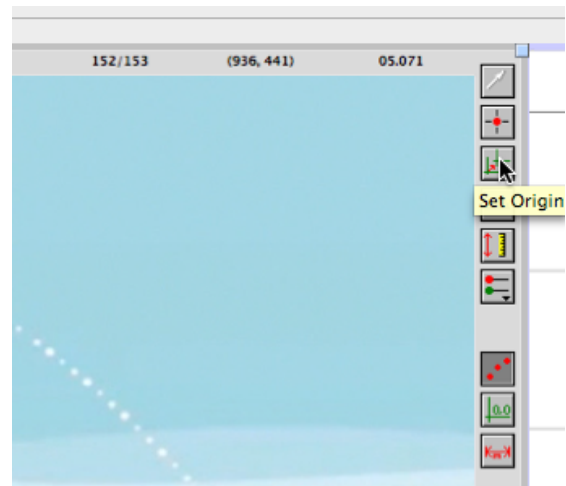
- Advance the movie to where the bird has left the slingshot.



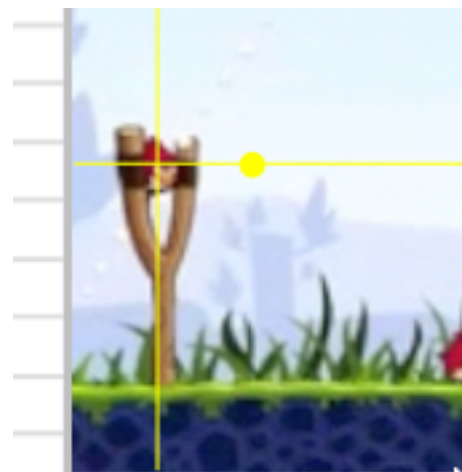
- Click on the button on the bottom left corner that says enable / disable video analysis.



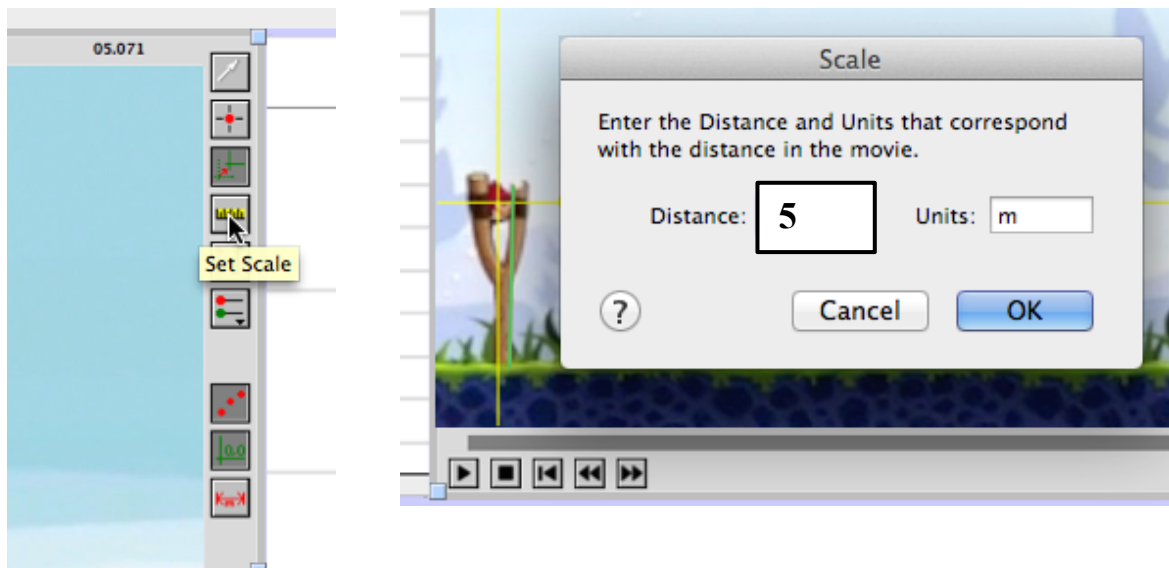
- Set the origin as the bird in the first frame that the bird is out of the slingshot. Click on the bird.



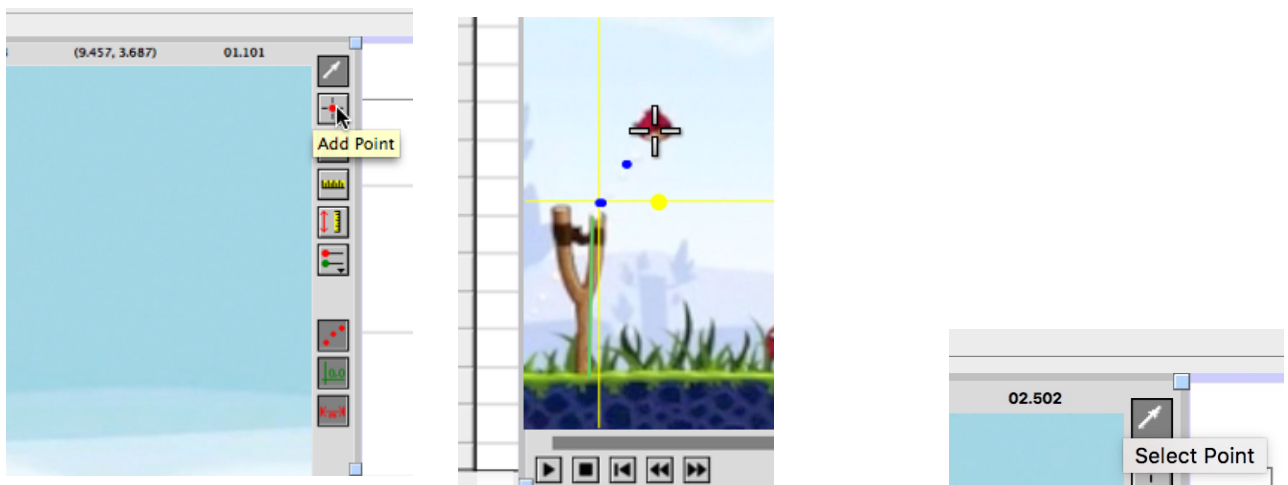
- If you have done this correctly there should be a yellow X – Y axis lines thru the bird.



- Set the scale to **5 m** for the height of the slingshot. You will need to drag the cross hairs from the top of the slingshot to the bottom.



- Then click on add a point button and then start clicking on the center of the bird. This will advance the video one frame and it will also record the position of the bird in the data table.



- Click on the select point button above the “add point” button.
- Once you get the bird tracked all the way to the other side of the screen you need to click on “Select point” button so you do not accidentally add points to your video.

- If you have a point that does not look right you can use the select point function to click on the bad point and then press delete on the keyboard.
 - If the entire video disappears then you need to go up to edit and undo delete.
- You will need to do curve fits on the Position vs Time graph, and make a new page with a Velocity vs Time graph on it and make a new page with an Acceleration vs Time graph on it.